

SQUIP-TYPE R390A/JRR - EXP. NO.

COL. 540 7926 002

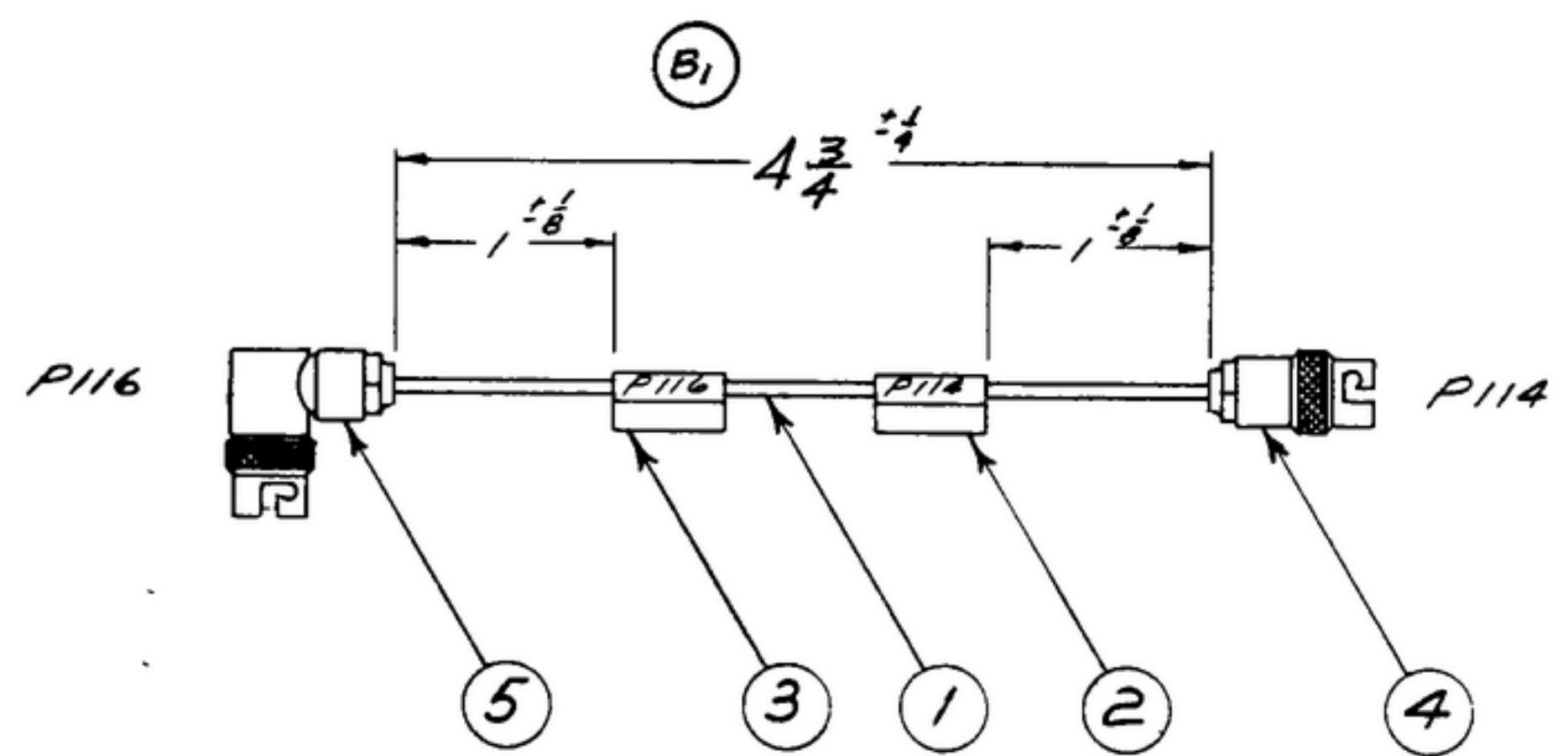
NOTICE: WHEN GOVERNMENT DRAWINGS, SPECIFICATIONS, OR OTHER DATA ARE USED FOR ANY PURPOSE OTHER THAN IN CONNECTION WITH A DEFINITELY RELATED GOVERNMENT PROCUREMENT OPERATION, THE UNITED STATES GOVERNMENT THEREBY ASSUMES NO RESPONSIBILITY FOR ANY OMISSION WHATSOEVER AND THE FACT THAT THE GOVERNMENT MAY HAVE FORMULATED, PUBLISHED, OR IN ANY WAY SUPPLIED THE SAID DRAWINGS, SPECIFICATIONS, OR OTHER DATA IS NOT TO BE REGARDED BY INDICATOR OR OTHERWISE AS IN ANY MANNER LICENSING THE HOLDER OR ANY OTHER PERSON OR CORPORATION, OR CONFERRING ANY RIGHTS OR PERMISSION TO REPRODUCE, USE, OR SELL ANY PATENTED INVENTION THAT MAY IN ANY WAY BE RELATED THERETO.

THIS DOCUMENT HAS BEEN PURCHASED BY THE GOVERNMENT AND MAY BE REPRODUCED AND USED IN CONNECTION WITH ANY GOVERNMENT PROCUREMENT OR MAINTENANCE OPERATION.

* FOR INFORMATION ONLY. CONTRACTOR MAY AT HIS OPTION DEVIATE FROM THESE PROCESS DETAILS.

REVISIONS

SYM	DESCRIPTION	DATE	APPROVAL
A,	A1-RODED APPL. SM-D-343619	4-NOV-59	42428-PC-59 REV'D PME
B,	B1-4 3/4 DIM. WAS 3 1/16	17-MAY-60	42428-PC-59 REV'D PME



559-0284-002	5	1	SM-B-283183	↑
559-0282-002	4	1	SM-B-283181	CONNECTOR-PLUG
559-0126-002	3	1	SM-B-249204-9	↑
559-0125-002	2	1	SM-B-249204-8	MARKER-CABLE
D.S.F. 559-0318-002	1	AS PER	SM-B-283210	CABLE-YELLOW

COLLINS PART NO.	ITEM	REQD	PART NO.	DESCRIPTION	MATL	MATL SPEC
LIST OF MATERIAL						
COLLINS PART NO. 559-0470002						

COLLINS NO.	QTY	NEXT ASSY	USED ON
559-0492-004	1	SM-D-249140	SC-DL-248775
		SM-D-343619	

DRAWN
ECS

CHECKED
R

APPROVED

UNLESS OTHERWISE SPECIFIED:
 DECIMAL DIMENSIONS INCLUDING HOLE SIZES MAY VARY ±.008
 FRACTIONAL DIMENSIONS INCLUDING HOLE SIZES MAY VARY ±1/64
 MACHINED ANGLES MAY VARY ±1°
 SHEARED ANGLES MAY VARY ±.25°
 BROKEN ANGLES MAY VARY ±1°
 ECCENTRICITY BETWEEN ANY DIAMETERS ON THE SAME CENTERLINE SHALL NOT EXCEED .010 TOTAL INDICATOR READING.
 ALL DIMENSIONS ARE FINISH DIMENSIONS INCLUDING APPLIED FINISH AND ARE GIVEN IN INCHES.

COLLINS-RADIO CO.
 CEDAR RAPIDS, IOWA
 14214-PH-51-93

SIGNAL CORPS

REVIEWED PME

APPROVED HLY
 PME

DATE 28 DEC 55

SCALE 1/1

DEPARTMENT OF THE ARMY
 SIGNAL CORPS ENGINEERING
 LABORATORIES

FORT MONMOUTH NEW JERSEY

SM-B-249118